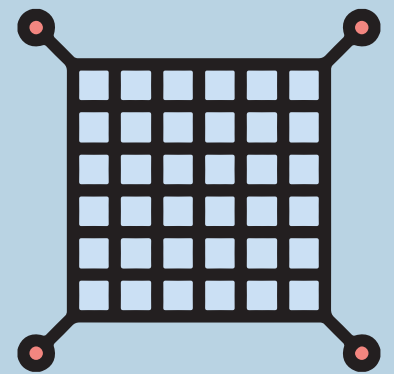
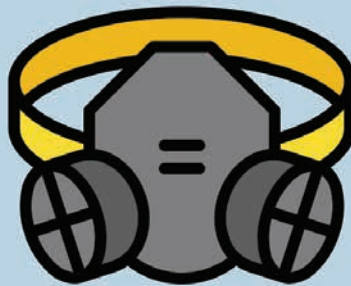


SAFEWELL

Services



SAFETYNET • LIFE JACKET • MEDICALKIT • WELDING SHIELD • SAFETY SIGN-AGE • ROAD SAFETY CONE • ESD FOOTWEAR • ROAD BARRIER • FIRE EXTINGUISHER • LADDER • FIRE BUCKET • WIND SOCK • WHEELCHAIR • SCAFFOLDING TAG • FOLD-ABLE STRETCHER • CAUTION TAPE • WELDING BLANKET • EYE WASH FOUNTAIN • RAIN JACKET • CONVEX MIRROR • BREATH ANALYSER • GAS MASK • TRAFFIC BATON • WASTE DISPOSAL BIN • JANITOR TROLLEY • ESD MAT

At Safewell we truly believe in offering a wide range of products for utmost safety at the work environment. To further this endeavour we are pleased to announce that, we, along with our manufactured products, are also offering safety products that do not fall under our brand.

This will offer a seamless and complete solution to all your industrial safety requirements under one roof, saving you the time you need to invest in reaching out to new & multiple suppliers.

Thanks to the trust and hope bestowed on us, we are able to offer you a wide range of quality safety products which can meet your expectations.

You may please go through a small preview of some of our offerings for the industrial safety supplies in this brochure.

Reach Us.

Corporate Office:

Acme Safety Wears Limited.

Eco-Station, Suit No 504. BP7,
Sector V, Salt Lake, Kolkata 700091.

+91 33 2287 8293 / 2367 5588

kolkata@acmesafety.in

Sales Network.

Bangalore

+91 84200 47036

bangalore@acmesafety.in

Chennai

+91 99403 55581

chennai@acmesafety.in

Ahmedabad

+91 91731 66647

gujarat@acmesafety.in

Gurgaon

+91 87500 56989

gurgaon@acmesafety.in

Hyderabad

+91 83093 78960

hyderabad@acmesafety.in

Pune

+91 84080 01515

mumbai@acmesafety.in

Ankleshwar

+91 91731 66647

gujarat@acmesafety.in

Jharkhand

+91 95340 22444

jharkhand@acmesafety.in

Chhattisgarh

+91 82407 00103

chhattisgarh@acmesafety.in

Odisha

+91 82407 00103

odisha@acmesafety.in

Vizag

+91 84200 47036

vizag@acmesafety.in

Madhya Pradesh

+91 82407 00103

madhyapradesh@acmesafety.in

W.B & North East

+91 79802 17824

sales@acmesafety.in

Kerala

+91 99403 55581

kerala@acmesafety.in



Scan for direct
WhatsApp Enquiry

Enquiry

+91 84200 47800 (WhatsApp)

enquiry@acmesafety.in

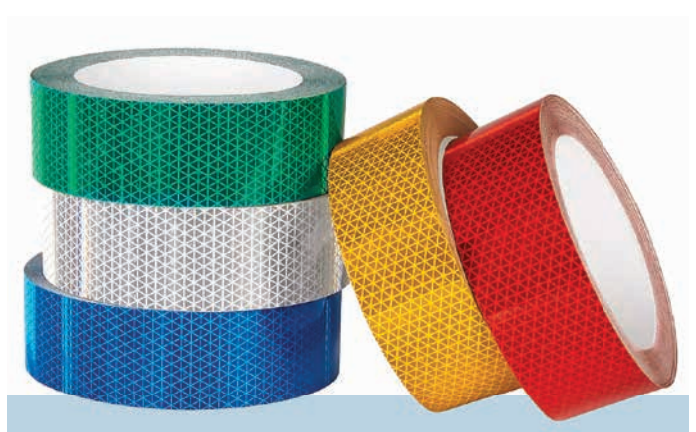


TAPE – ANTI SLIP

Anti slip tape for indoor or outdoor use.

SPECIFICATIONS

- ↘ **THICKNESS** - 600 microns.
- ↘ **SIZE** - Width 48mm. Each Roll 5 meters.
- ↘ **BONDING** - Synthetic Rubber - Hot Melt adhesive.
- ↘ **COLOR** - Black, White, Grey, Clear, Glow, Yellow-Black, Black-with-Reflective-Strip, Black-with-Glow-Strip.
- ↘ **PRINTED** - "Caution" / "Watch Your Step".
- ↘ **OPTION** - Single or Dual Color.



TAPE – HIGH VISIBILITY

Reflective & Non Tear-able safety tape.

SPECIFICATIONS

- ↘ **THICKNESS** - 100 microns.
- ↘ **SIZE** - Width 48mm. Each Roll 45 meters.
- ↘ **BONDING** - Acrylic Solvent.
- ↘ **COLOR** - White, Yellow, Red, Green, Blue.



TAPE – BARRICADING

Caution tape for barricaded zones.

SPECIFICATIONS

- ↘ **BASE MATERIAL** - HDPE
- ↘ **THICKNESS** - 30 microns.
- ↘ **SIZE** - Width 3 inches or 4 inches.
- ↘ **FORM** - Roll of 100 meters to 500 meters.
- ↘ **STYLE** - Tubular form.
- ↘ **PRINTING** - Roto Print.
- ↘ **COLOR** - White-Red, Yellow-Black.



BREATH ANALYSER

Hand-held alcohol tester.

SPECIFICATIONS

- ↘ **SENSOR TYPE** - NM Hot-wire alcohol sensor.
- ↘ **DETECTION RANGE** - 0.001.00mg/L (0.000.20% BAC; 0.002.00g/L; 0.002.00% BAC)
- ↘ **ALARM LEVEL** - 0.24mg/L (0.05% BAC) / 0.50g/L (0.50% BAC)
- ↘ **ACCURACY** - ±5% F.S.
- ↘ **RESPONSE TIME** - 5s
- ↘ **WARM-UP TIME** - 20s
- ↘ **RESUME TIME** - ≤20s
- ↘ **WORKING VOLTAGE** - DC4.5V3×AAA Batteries.
- ↘ **WORKING CURRENT** - ≤120mA
- ↘ **WORKING TEMPERATURE** - 10°C to 50°C
- ↘ **RELATIVE HUMIDITY** - ≤95% No Dew



FIRST AID – EYE WASH BOTTLE

Emergency eye wash splash bottle.

SPECIFICATIONS

- **MADE OF** – Superior grade PVC.
- **CAPACITY** – 500 ML.
- **INCLUDES** – Eyewash Bottle with a Wall Mounted Stand.
- **FEATURES** – Good Flow of water, Cleans Eye Fast, Waste Water Drains Separately, Comes with Covering lid.



FIRST AID – STRETCHER

First responders fold-able stretcher.

SPECIFICATIONS

- **MADE OF** – Aluminium poles with Vinyl coated Nylon cover.
- **STRETCHED DIMENSION** – 205(L) x 53(W) x 13(H) Cms.
- **FOLDED DIMENSION** – 102(L) x 17(W) x 8(H) Cms.
- **WEIGHT** – 4.8 Kgs (Self). 5.5 Kgs (Gross)
- **LOAD WEIGHT** – 159 Kgs.
- **LIFT TYPE** – Horizontal.
- **FEATURES** – Heavy duty aluminium poles and vinyl coated nylon covers that resist stain, blood, body fluids. Non-slip hand grips to help EMT's keep a firm grasp on the stretchers.



FIRST AID – EYE WASH STATION

Emergency Eye Wash / Shower Station.

SPECIFICATIONS

- **MADE OF** – G.I. "B" Class pipes and fittings made IS: 10592 Marked and Approved Push Plate operated Eye Wash Unit and Pull Push Rod Operated Body.
- **FINISH** – Full Eyewash Epoxy Powder Coated – Yellow.
- **INCLUDES** – Corrosion resistant Cycolac material made fluorescent colour eyewash bowls provided.
- **INCLUDES** – Corrosion resistant Cycolac material made Shower head bowls of Fluorescent colour having perforated holes in conical shape for easy and huge flow of water.
- **OPERATIONS TYPE** – Hand operated & Foot operated.
- **OPTIONAL TYPES** – With Shower & without Shower.

FEATURES

- Atomiser unit with imported nylon filter with flow compensator and pop off dust covers.
- Large but lightweight aluminium push handle for easy operation.



ROAD STUD

Permanent anchored reflective road studs.

SPECIFICATIONS

- **MADE OF** – ABS Plastic / Aluminium Alloy.
- **COLOUR** – Yellow or Red.
- **SIZE** – 15 x 11 x 2 Cm.
- **FEATURES** – Reflective inserts.



FIRST AID – MEDICAL KIT

Emergency First Aid Medical Box.

SPECIFICATIONS

- ↘ **MADE OF** – ABS Plastic / Stainless Steel.
- ↘ **BOX COLOUR** – High Visibility Orange.
- ↘ **MEDICINE KIT LIMIT** – 1, 5, 10, 15, 25, 50, 75, 100, 125, 150 personnel use.
- ↘ **BOX FEATURE** – Impact & Temperature resistant.
- ↘ **IN BOX CONTENTS** – Content of medicine as per CE 0123 certified for usage and self life. Colour coded as per ANSI/OSHA Z308.1 – 2015 norms.
- ↘ **MOUNTING PROVISION** – Supplied with a Wall Mount Bracket for Box larger than 25 persons kit.

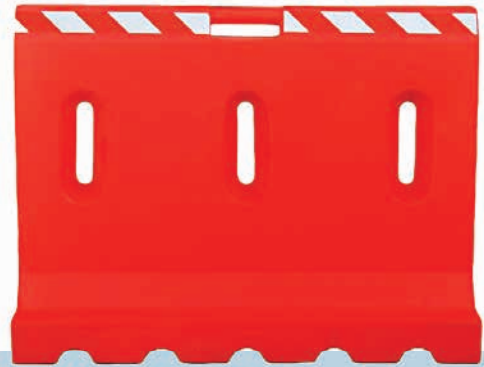


ROAD SAFETY CONE

Portable high visibility road safety cone.

SPECIFICATIONS

- ↘ **MADE OF** – Plastic.
- ↘ **COLOUR** – Red.
- ↘ **SIZE CODE** – 750 mm.
- ↘ **DIMENSION** – 7.5 x 7.5 x 10.5 Cm.
- ↘ **WEIGHT** – 1.5 Kg.
- ↘ **TAPE** – White Reflective Tape – 1H.
- ↘ **BASE** – Heavy duty rubber.
- ↘ **AVAILABLE OPTIONS** – Heavy Base (5kg) Sand filled with 1H or 2H – Reflective tapes.



AREA BARRICADE

Portable area barricading block.

SPECIFICATIONS

- ↘ **MADE OF** – Plastic.
- ↘ **FILL TYPE** – Water.
- ↘ **COLOR** – Red / Yellow.
- ↘ **SIZE** – 100 x 75 x 35 Cm.
- ↘ **FEATURES** – Reflective tape.



FLEXIBLE SPRING POST

Anchored high visibility road safety post.

SPECIFICATIONS

- ↘ **MADE OF** – Polyurethane with reflective strap and zinc plated ms bolt 3"X 1/2".
- ↘ **DIMENSION** – Length 75 x 8 Diameter. Base 20 in Cm.
- ↘ **COLOUR** – Orange. UV resistant.
- ↘ **WEIGHT** – 1 Kg.
- ↘ **FEATURES** – It can be quickly restored into original shape without doing any damage to spring post as well as vehicles. 3 reflective band of 6 cm. base dia 200 cm with 3 holes. 3 zinc plated bolt 3"X1/2" will be fixed on the surface for better grip with ground.
- ↘ **APPLICATION** – Traffic Safety.



SAFETY CONE CHAIN

Safety cone connecting ring & chain.

SPECIFICATIONS

- ✎ **MADE OF** - Plastic.
- ✎ **COLOUR** - Red & White.
- ✎ **TYPE** - S shape interlinked chain.
- ✎ **SIZE** - Chain - 2" & 1". Ring - Standard.
- ✎ **THICKNESS** - 4 mm & 6 mm.
- ✎ **UNIT OF MEASUREMENT** - Meters.



WHEEL STOPPER CHOCK

Heavy duty portable wheel chock.

SPECIFICATIONS

- ✎ **MADE OF** - Reused Rubber.
- ✎ **DIMENSION** - 165(H) x 241(L) x 177(W) mm.
- ✎ **COLOUR** - Black.
- ✎ **WEIGHT** - 5.5 Kg.
- ✎ **FEATURES** - Wheel stopper is designed for non-slip of truck and heavy vehicles. It is weather proof and scratch resistant.
- ✎ **APPLICATION** - Chocks are placed to prevent accidental movement. Chocks are used in aviation dockyards, warehouses, and mines. "OSHA" has recommended wheel chocks during loading or unloading of heavy trucks.



TRAFFIC LIGHT BATON

Rechargeable light baton for guiding attention.

SPECIFICATIONS

- ✎ **MADE OF** - Handle - ABS. Tube - Polycarbonate.
- ✎ **POWERED BY** - Battery operated or Rechargeable.
- ✎ **SIZE** - 12/21 inches.
- ✎ **LIGHT COLOUR** - Red / Green.
- ✎ **LIGHT MODE** - Flash / Blinking.
- ✎ **FEATURES** - Hand Sling.

FOR RECHARGEABLE BATON LIGHT

- ✎ **VOLT** - 3.7 Volt.
- ✎ **BATTERY CAPACITY** - 500 MaH Li-ion.



TRAFFIC SPEED HUMP

Speed limiting road humps.

SPECIFICATIONS

- ✎ **MADE OF** - Plastic / Rubber.
- ✎ **COLOUR** - Yellow & Black blocks.
- ✎ **SIZE** - 100 x 35 x 5 Cm / 100 x 40 x 7.5 Cm.
- ✎ **UNIT OF MEASUREMENT** - Meters.
- ✎ **FEATURES** - With or without reflective inserts.



SOLAR BLINKER WARNING LIGHT

Caution light blinkers with solar power.

SPECIFICATIONS

- **MADE OF** - Body made from PVC with solar light. Panel & clamp from steel.
- **DIMENSION** - 13(L) x 8(W) Cm.
- **COLOUR** - Red & White.
- **FEATURES** - It is suitable to mount on delineator or fixing on pole thickness up to 6 cm. A photovoltaic panel 6.5 cm dia is provided with a battery for flashlight. It is easy to fit.
- **APPLICATION** - It is used during night as a warning light for traffic management or used during night for warning purposes.



REFLECTIVE MEDIAN MARKER

Road median marker.

SPECIFICATIONS

- **MADE OF** - Body made from thermoplastic & fluorescent retro reflective sheeting.
- **DIMENSION** - 12 x 2.8 x 18 Cm.
- **COLOUR** - Black Body & Yellow Reflective part.
- **ADDITIONAL FEATURES** - UV resistant, withstand climatic change & impact excellent resistance to soot, dirt & mud long distance visibility.
- **APPLICATION** - Night time visibility on road to avoid accidents.



TRAFFIC SPEED RUMBLER

Speed limiting road rumblers.

SPECIFICATIONS

- **MADE OF** - Plastic / Rubber.
- **COLOR** - Yellow & Black blocks.
- **SIZE** - 100 x 13 x 3 Cm.
- **UNIT OF MEASUREMENT** - Meters.



REFLECTIVE MEDIAN MARKER

Road median marker.

SPECIFICATIONS

- **MADE OF** - Body made from thermoplastic & fluorescent retro reflective sheeting both side.
- **DIMENSION** - 15 x 10 x 10 Cm.
- **COLOUR** - Black Body & Yellow Reflective part.
- **ADDITIONAL FEATURES** - UV resistant, withstand climatic change & impact excellent resistance to soot, dirt & mud long distance visibility.
- **APPLICATION** - Night time visibility on road to avoid accidents.

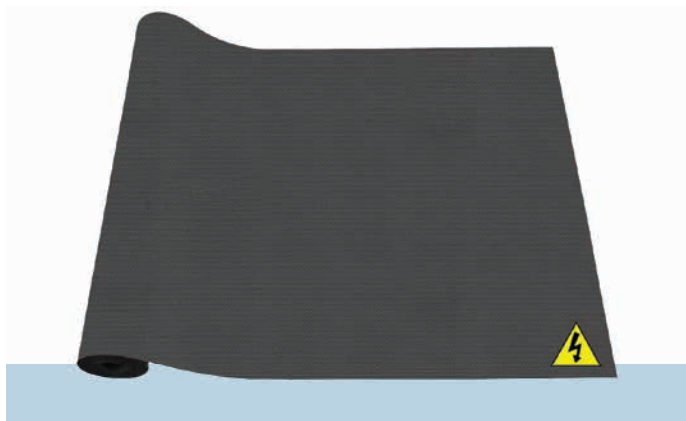


CONVEX MIRROR

Convex mirror for blind turn alert.

SPECIFICATIONS

- ↘ **SIZE** - 18", 24", 32" & 40".
- ↘ **FRAME** - Plastic with shade canopy.
- ↘ **POLE** - Screw Type or Ground Type
- ↘ **MOUNTING CLAMP** - Universal clamp for 18" and 24" Mirror. Different clamp for 32" & 40" Mirrors.



INSULATION MAT

Industrial Electrical insulation mat.

SPECIFICATIONS

- ↘ **TYPE** - Rolls or Mats form.
- ↘ **LENGTH** - 5m, 10m, 20m or upto 100m Roll.
- ↘ **WIDTH** - 1m, 1.2m, 1.5m.
- ↘ **COLOR** - Red, Black, Blue, Grey.
- ↘ **CLASS** - A, B & C
- ↘ **THICKNESS** - Class A - 2.0 mm, Class B - 2.5 mm, Class C - 3.0 mm.
- ↘ **MAX. USE VOLTAGE** - Class A - 3.3 KV, Class B - 11 KV, Class C - 33 KV.
- ↘ **AC PROOF VOLTAGE** - Class A - 10 KV, Class B - 22 KV, Class C - 36 KV.



CAUTION FLOOR STAND

Portable attention stand.

SPECIFICATIONS

- ↘ **MADE OF** - PVC.
- ↘ **DIMENSION** - Width at bottom 30 cm.
- ↘ **COLOUR** - Yellow.
- ↘ **WEIGHT** - 700 grams.
- ↘ **FEATURES** - It is foldable & light in weight, eye catching board. Height : 60 cm, maximum width 40 cm.
- ↘ **APPLICATION** - Hospital hotels, offices, banks, malls, etc.,. Where chances of slip when floor is wet.
- ↘ **TEXT TYPE** - MEN AT WORK, UNDER MAINTENANCE, CLEANING IN PROGRESS.



ELECTRICAL HAND GLOVES

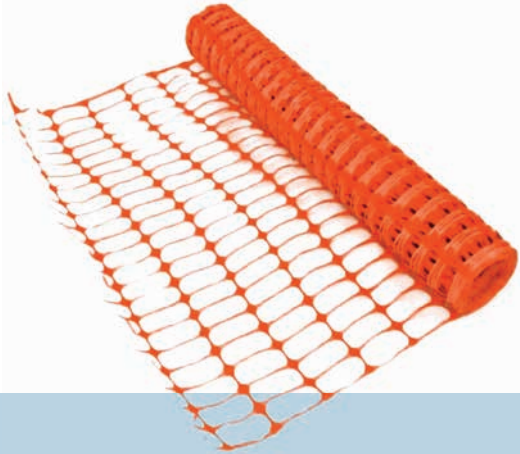
Rubber hand gloves with electrical resistance.

SPECIFICATIONS

- ↘ **MADE OF** - Rubber.
- ↘ **LENGTH** - 14 inches.
- ↘ **TEST VOLTAGE** - 11 KV & 33 KV.

WORKING VOLTAGE

- ↘ **11KV** - 1100 Volts.
- ↘ **33 KV** - 7500, 11000, 17000 & 26500 Volts.

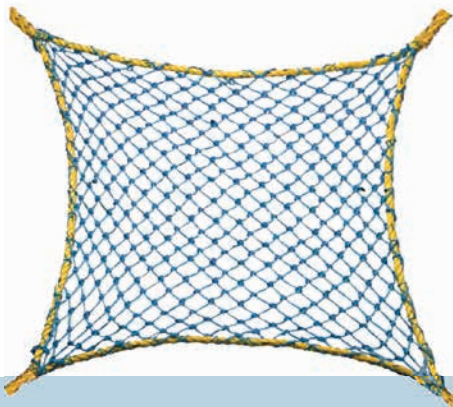


FENCE SAFETY NET

Light weight yet durable barrier net.

SPECIFICATIONS

- **MADE OF** - HDPE material for long life span.
- **DIMENSION** - 65mm X 35mm, 1M X 50M roll.
- **COLOUR** - Orange.
- **WEIGHT** - 5 Kg.
- **FEATURES** - UV resistance, easy to install & easy to take down, light weight, economical, rust proof, reusable.
- **APPLICATION** - Premier barrier, supply temporary fencing, uses includes around construction site and for crowd control.



FALL PROTECTION SAFETY NET

Fold-able safety net.

SPECIFICATIONS

- **SAFETY NET SIZE** - 10 x 5 meter or 10 x 3 meter.
- **MADE OF** - Braided / Mono-filament.
- **MESH SIZE** - 100 mm & 30 mm.
- **MESH ROPE** - 4 mm & 2 mm & 2.5 mm.
- **BORDER ROPE** - 12 mm.
- **WITH FISHNET** - 20-25 mm.
- **WEIGHT** - 7, 7.8, 8.5, 9.5, 10.5 Kgs.



WINDSOCK INDICATOR

Heavy duty wind indication sock.

SPECIFICATIONS

- **MADE OF** - Polyester cloth and inside lining also polyester cloth.
- **DIMENSION** - length 6 feet (185cm) Approx.
- **COLOUR** - Red & White.
- **WEIGHT** - 440 grams.
- **FEATURES** - Periphery of cloth at ring end is 196 cm approx. It is suitable to fit on a wind indicator stand having double ball bearings for easy revolving and ring diameter 60 cm. A 10 feet long string is provided to fix the balloon with a ring.
- **APPLICATION** - To indicate the direction of wind in Chemical Industries, Pharmaceuticals, Airport, Port etc.



SAFETY SHADE NET

Dust & particle safety shade.

SPECIFICATIONS

- **SIZE** - 50 x 3 Meter.
- **TYPE** - Roll Form.
- **SHADE RATIO** - 50% , 75% or 90%.
- **WEIGHT** - 6 Kg, 11 Kg & 18 Kg as per model.
- **COLOR** - Green.



EMERGENCY FIRE BUCKET

First responder fire buckets.

SPECIFICATIONS

- ✚ **MADE OF** - G. I.
- ✚ **COLOUR** - Red Powder Coated with painted text.
- ✚ **BUCKET SIZE** - 9 litre.
- ✚ **STAND OPTION** - With or Without Canopy in 2 Bucket & 4 Bucket options.
- ✚ **OPTIONAL** - Spare buckets.



FIRE EXTINGUISHER

Portable IS Certified fire extinguisher.

AVAILABLE TYPES

- ✚ **ABC** - 1, 2, 4, 6 & 9 Kgs.
- ✚ **CO2** - 2, 3, 4.5, 6.5, 6.8 or 9 Kgs.
- ✚ **FOAM** - 9 Litre.
- ✚ **WATER** - 9, 45 or 50 Litre.



HAZARD SIREN

Electricity powered industrial siren.

SPECIFICATIONS

- ✚ **RANGE** - 0.5, 1, 1.5, 2 or 3 Kilometer.
- ✚ **POWERED BY** - 220 Volt (0.5 to 3 km) or 440 Volt (3 km)
- ✚ **MADE OF** - Aluminium Casting.
- ✚ **WINDING** - Copper.
- ✚ **ELECTRICAL PHASE** - Single. Three for 440v 3 Km model.
- ✚ **MOTOR RPM** - 600. 2800 for 3 Km model.
- ✚ **MOUNTING** - Single / Double.



MEGAPHONE

Hand-held battery operated megaphone.

SPECIFICATIONS

- ✚ **MADE OF** - All ABS body. Lightweight yet sturdy.
- ✚ **OPERATES ON** - UM-3 (AA) Pencil Cells & 12V Car Battery.
- ✚ **AMPLIFICATION** - Class-D Amplifier provides high efficiency of power consumption that extends the battery life.
- ✚ **BUILT-IN** - Siren. Clear, long range reach.
- ✚ **MICROPHONE** - With Volume Control & Press-to-Talk Switch.
- ✚ **ADDITIONAL** - Microphone switch is provided in the hand grip.

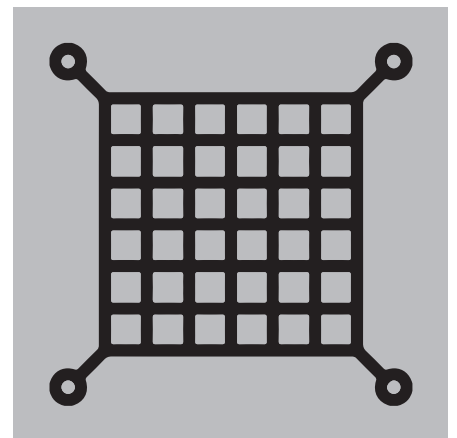
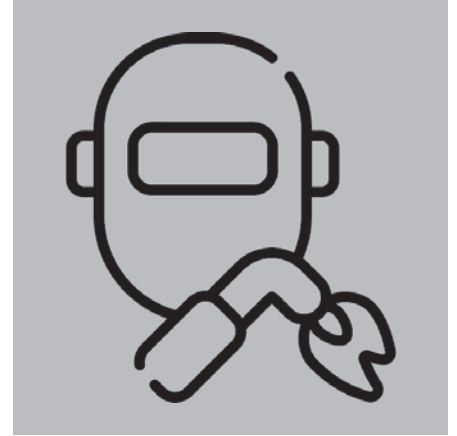
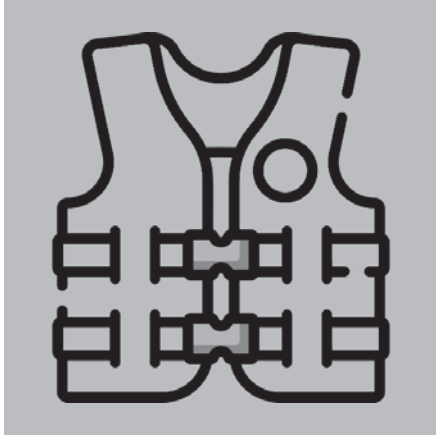


Safewell Services

One Stop for all your
Industrial Safety
Requirements.

SAFEWELL

Services



SAFETYNET • LIFE JACKET • MEDICALKIT • WELDING SHIELD • SAFETY SIGN-AGE • ROAD SAFETY CONE • ESD FOOTWEAR • ROAD BARRIER • FIRE EXTINGUISHER • LADDER • FIRE BUCKET • WIND SOCK • WHEELCHAIR • SCAFFOLDING TAG • FOLD-ABLE STRETCHER • CAUTION TAPE • WELDING BLANKET • EYE WASH FOUNTAIN • RAIN JACKET • CONVEX MIRROR • BREATH ANALYSER • GAS MASK • TRAFFIC BATON • WASTE DISPOSAL BIN • JANITOR TROLLEY • ESD MAT